

CADOGAN SQUARE, LONDON, SW1X

£34,450 PER MONTH

Goldman Greg are delighted to present this immaculate interconnecting apartment, refurbished to the highest specification and arranged over the raised ground and first floors, offering expansive and elegant living accommodation of approximately 2,700 sq ft. The home combines contemporary finishes with striking period details, creating a sophisticated yet welcoming environment.

The raised ground floor features a grand principal bedroom suite with generous proportions, bespoke fitted storage, and a luxurious en suite bathroom. This level also includes a connecting studio apartment, complete with its own kitchenette, reception area with a feature fireplace, and a separate bedroom and bathroom—ideal for guests, visiting family, or staff. A mezzanine level provides additional cloakroom and storage facilities.

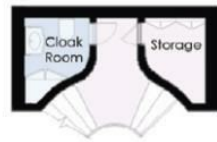
The first floor is dedicated to impressive living and entertaining space. A large reception and dining room opens onto two private balconies, flooding the room with natural light. The contemporary kitchen is complemented by a pantry and a separate utility room, offering excellent practical convenience.



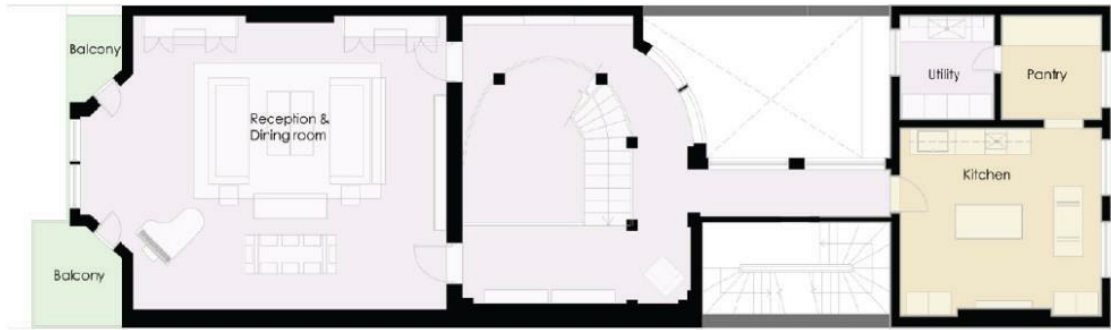
Goldman Greg



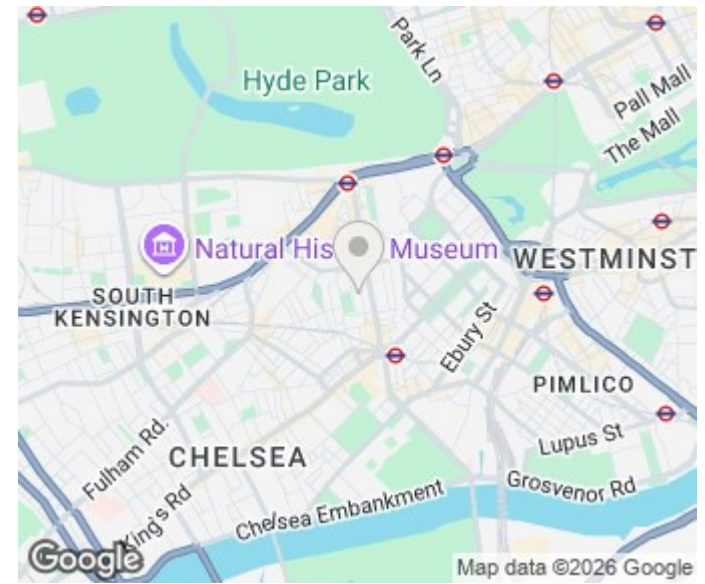
RAISED GROUND FLOOR PLAN



Mezzanine Level



FIRST FLOOR PLAN



Energy Efficiency Rating		
	Current	Potential
Very energy efficient - lower running costs		
(92 plus) A		
(81-91) B		
(69-80) C		
(55-68) D		
(39-54) E		
(21-38) F		
(1-20) G		
Not energy efficient - higher running costs		
England & Wales	EU Directive 2002/91/EC	

Agents Note: Whilst every care has been taken to prepare these particulars, they are for guidance purposes only. All measurements are approximate and are for general guidance purposes only and whilst every care has been taken to ensure their accuracy, they should not be relied upon and potential buyers/tenants are advised to recheck the measurements

Goldman Greg
143 Leaman Street
London
E1 8EY

02079770018
leads@goldmangreg.co.uk
www.goldmangreg.co.uk

